

01-封面页 Cover Page:

Department name: 材料科学与工程技术学院

School of Materials Science & Engineering, PKUSZE

背景色调: 金黄色 标题字体: 暗红色 主题内容字体: 黑色



背景图片:



02--学院简介 PKUSZ

Peking University Shenzhen Graduate School (PKU Shenzhen), primarily focused on full-time graduate education, is an integral part of PKU's progression toward becoming a world-class university. PKU Shenzhen's goal is to build "a world-class international campus of PKU in Shenzhen" while adhering to the academic principles of "New Frontiers, Interdisciplinary Studies, Applied Research and International Standards."

PKUSZ is a graduate education institution comprised of seven schools, with another two new schools under construction. PKUSZ's faculty includes scholars with previous teaching appointments at prestigious schools including Cornell University, Harvard University, Cambridge University and the University of California. Concurrently, PKUSZ's unique disciplines and degrees — together with PKU prestige — attract top students from China and abroad.

Founded in Shenzhen, a pioneer city leading China's Reform and Opening-up Policy, PKUSZ has inherited PKU's traditions of honor, responsibility and commitment, and is promoting higher education initiatives, cultural heritage and education renewal. PKUSZ embraces "Diligence, Conscientiousness, Realism and Innovation," and aims to combine the illustrious traditions of "Patriotism, Advancement, Democracy and Science" with Shenzhen's innovation and creativity. While enhancing Shenzhen's educational environment, PKUSZ strives toward PKU's goal of being a world-class university.

"Integrate Peking University's tradition; carry forward the Shenzhen spirit; build a world-class international campus."

--ZHOU Qifeng, President of Peking University

图片:

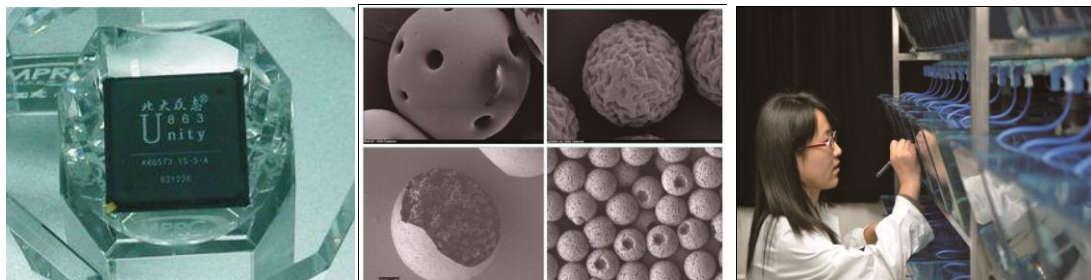
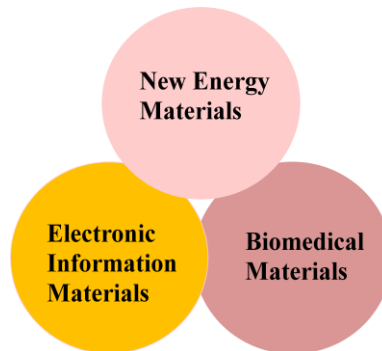
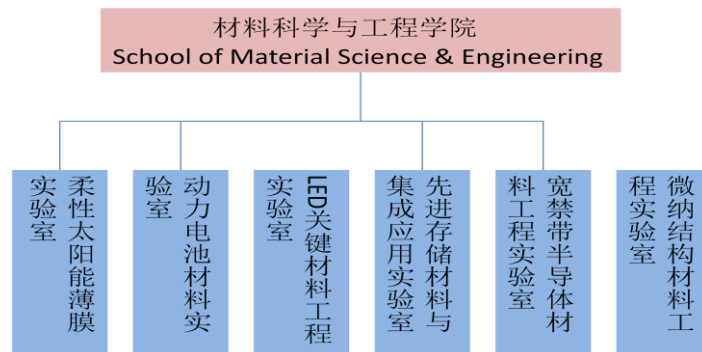


03-About School of Material Science & Engineering

The School of Material Science & Engineering (SMSE) is a new member in the big family of PKUSZ. Founded in 2011, it is designed to be a unique innovation centre in PKUSZ, which combines advanced material science research and applied engineering development. The school is developing a new collaboration pattern between schools and industries. It aims to become a world class research centre a new home for talented and ambitious scientists. Its mission is to identify key technology problems in industry R&D and search technology breakthroughs in academic environment.

SMSE will house six key laboratories, covering research areas such as advanced energy materials, new memory device materials and biomedical materials labs. We welcome scientists from innovative research institutions worldwide.

图片:



04-Recruitment Q/A

(1) Q: How to apply for jobs in SZPKU?

A: We are recruiting talented scholars from top universities and research institutes in the world. Candidates must have an earned doctorate in chemistry, physics, electrical engineering, materials science, computational materials science or other related field and demonstrated research expertise. Interested applicants should submit CV, the statement of research to Prof. Fred Pan (panfeng@szpku.edu.cn)

(2) Q: How does SZPKU recruit students

A: Students must have matched the PKU entrance standard in the National Graduate Students University Entrance Exams. Qualified students can choose their supervisor in either Beijing or Shenzhen.

(3) Q: What is the unique feature of SZPKU?

A: SZPKU has got a unique international culture in its campus. Most of the university staffs have got oversea background. It is one of the best places for oversea scholars who are planning to come back to mainland China.

(4) Q: Where will I live if I come to SZPKU?

A: Two options: 1.One can apply for ShenZhen Lecturers' Apartment; 2.One can rent a private flat and apply for government subsidies.

(5) Q: What kind of benefits will I receive in SZPKU?

A: Local competitive pay will be offered. Some distinguished oversea scholars could receive starting packages from our school. One can also apply for different levels of High Skill Expert programs funded by the local Shenzhen government. Qualified candidates could receive an relocation awards of 0.8-1.5 million RMB.

High Skill Expert Recruitment Program (高级人才计划):

Program Level	Program Name	Bonus	Information Source
National Level	Global Expert Recruitment Program	0.5-1m RMB	www.1000plan.org www.safea.gov.cn
State Level	GuangDong LinJun Plan	1mRMB plus 5m RMB Research Grant	Guangdong.caiep.org
City Level	Overseas High Skill Talented People Plan	0.8-1.5m RMB	www.szhrss.gov.cn/hdjl/ztlm/gccrcfwgl/xwg/kgjh